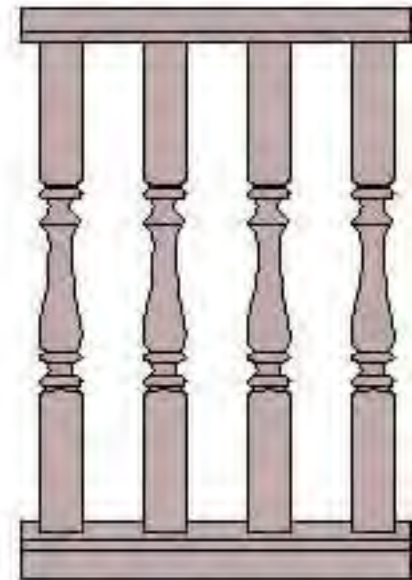

General policies for balustrade design:

- May *reinstall* as existing if removed only for *repairs*
 - Must meet building code and guidelines if *replacing* entire existing with new material
 - Must meet building code and guidelines if installing new where none existed before
 - Does not need to meet building code if *not* 30" above ground
-

Baluster spacing – in general

- Balusters 2-1/2" wide (actual size) should be installed at 6" on center.
- Balusters over 2 -1/2" wide (actual size) should be installed at 4" on center.



6" OC Spacing

Following are potential options

- For balustrade design . . .



Double top rail option



Double top rail option



Double top rail option



Double bottom rail option



Wider top rail option



Wider bottom rail option



Square balusters with square posts



Overlapping turned balusters

- No!



Overlapping square balusters

- No!



Overlapping chamfered balusters

- No!



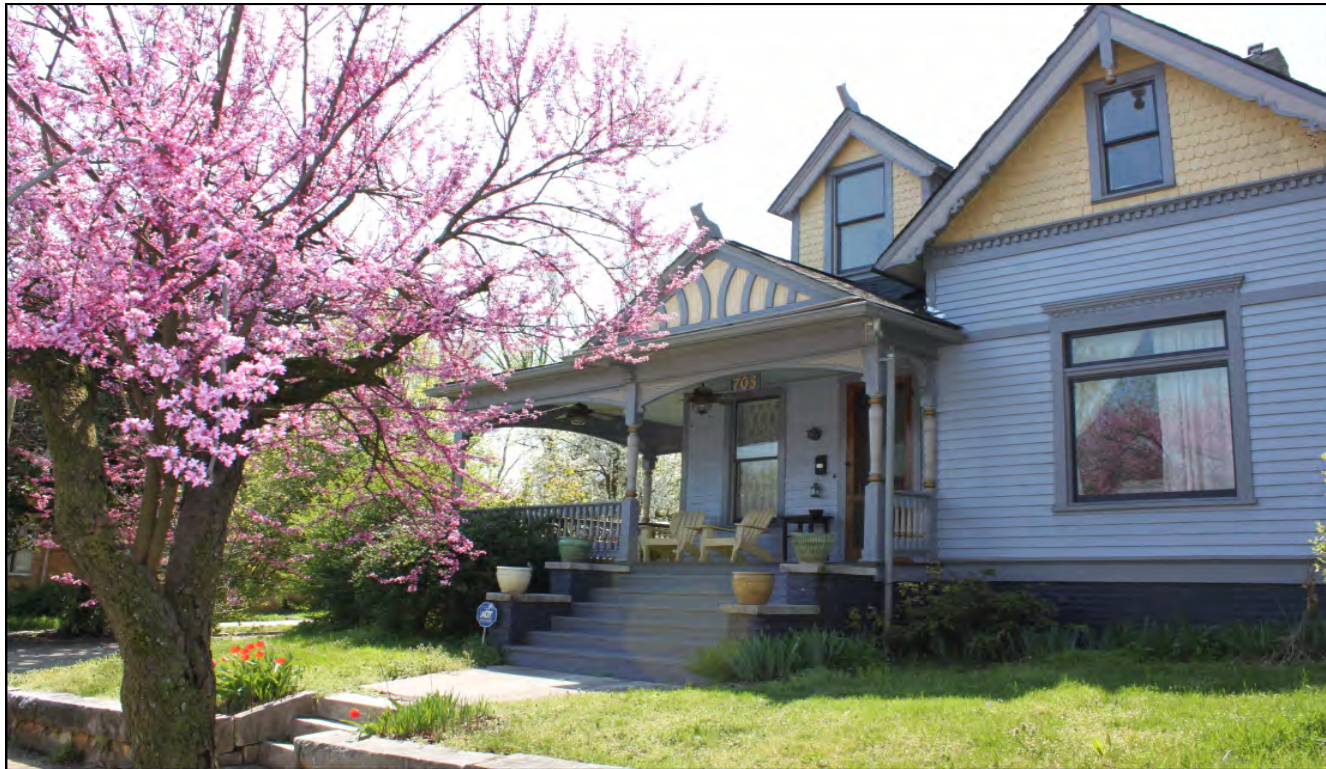
Turned balustrade w/heavy square posts

- No!



Queen Anne - Eastlake

- **1860 - 1880s:** Eastlake-influence with turned posts and spindled balustrade



Queen Anne Cottage

- **1860 - 1880s:** Folk Victorian cottage with turned posts and spindle-work



Queen Anne Transitional

- **1880 - 1910:** Classical elements: Palladian-like window, grouped columns, turned balusters



Queen Anne Transitional

- **1898:** Classic columns on piers with turned balustrade



Queen Anne transitional w/ classic porch



Queen Anne Free Classic

- **1900 - 1920:** Colonial Revival-influenced with heavy cornice, dentil moldings, classical columns on piers, turned balustrade



Queen Anne Free Classic



Queen Anne Free Classic

- Broad-radiused wrap-around porch, grouped columns



Following are balustrade examples

- Appropriate for period and style . . .



Queen Anne Free Classic

- Classic columns & heavier balusters



Queen Anne with Neoclassical influence

- Classic columns with heavier balusters



Queen Anne Free Classic

- columns with heavier balusters



Neoclassical

- Classic columns with square balusters



Queen Anne Free Classic

- Fluted columns with square balusters



Traditional Queen Anne

- Turned posts & delicate spindle balustrade



Traditional Queen Anne

- Turned posts & delicate spindle balustrade



Colonial Revival 4-Square

- Square columns with square balusters



Colonial Revival

- Battered columns with square balusters



Craftsman Cottage

- Battered columns with square balustrade



Craftsman Cottage

Battered columns with square balustrade

